

# ActivBoard

Mount, Fixed, Adjustable and Mobile



<b>Image for Alignment</b>	<b>3</b>
<b>Rotating the Image</b>	<b>4</b>
If serial number WEST-P12290001 or later this is not required	
<b>Aspect Ratio Setting</b>	<b>4</b>
Prior to serial number WEST-P12020001 or later this is not required	
<b>EST – P1 Aspect Ratio Setting</b>	<b>5</b>
Post to Serial - WEST-P12020001 using whiteboard option	
<b>UST – P1 Aspect Ratio Setting Using the ActivBoard Installation Option</b>	<b>6</b>
<b>Identifying Adjustment Points</b>	<b>7</b>
<b>Sizing the Image</b>	<b>7</b>
<b>Horizontal Alignment</b>	<b>8</b>
<b>Levelling of Image</b>	<b>9</b>
<b>Final Alignment - #1</b>	<b>10</b>
<b>Final Alignment - #2 (if required)</b>	<b>11</b>
<b>Notes</b>	<b>12</b>

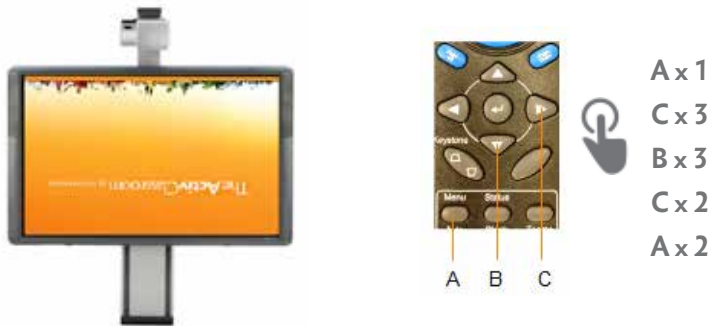


# EST-UST P1 Projector Alignment Guide

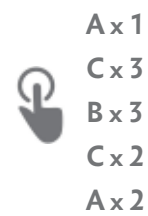
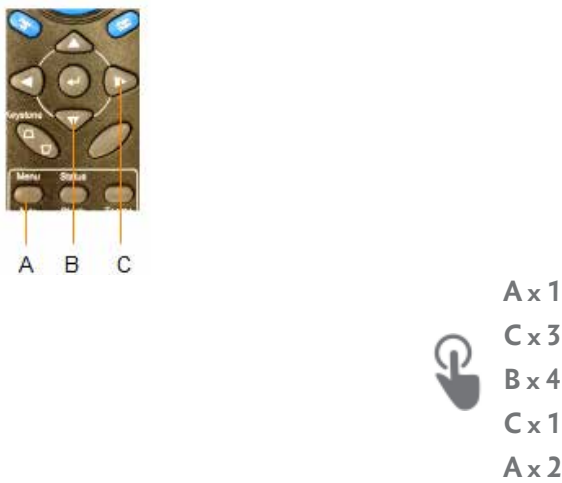
# Rotating the Image

## EST-P1 Only

Rotating the image EST P1 (prior to serial – WEST –P12190281)  
after this the rotation is not required



## Aspect ratio setting prior to serial - WEST-P12020001



387/587 – Fill = Default



178/378/578 – 4:3



595 – 16:9



Touch 88 – Fill = Default



Touch 78 – 4:3



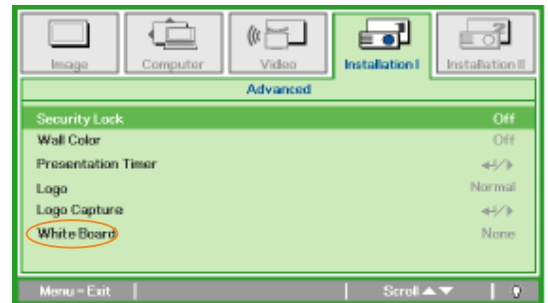
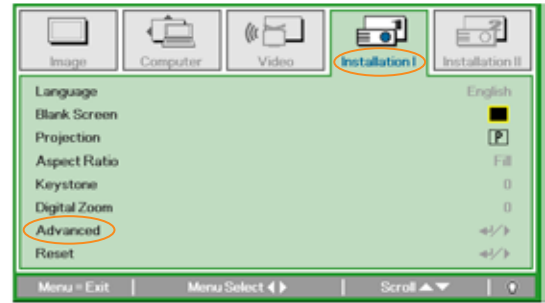
395 – 16:9



## EST-P1

Aspect ratio setting prior to serial - WEST-P12020001

Using the whiteboard option



A x 1  
C x 3  
B x 7  
C x 1  
B x 6  
C x 1  
A x 3

A x 1  
C x 3  
B x 7  
C x 1  
B x 6  
C x 2  
A x 3

A x 1  
C x 3  
B x 7  
C x 1  
B x 6  
C x 3  
A x 3

87 – Fill = Default



78 – 4:3



95 – 16:9



Touch 88 – Fill = Default



Touch 78 – 4:3

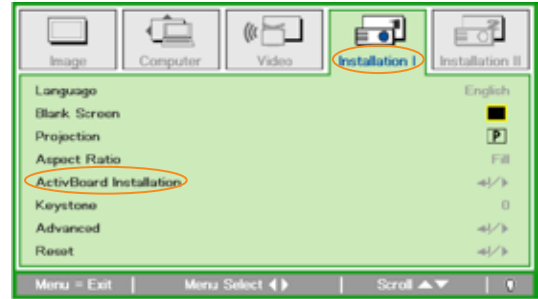


395 – 16:9



## UST-P1

Aspect ratio setting using the ActivBoard installation option



- A x 1
- C x 3
- B x 5
- C x 1
- B x 1
- C x 1
- A x 3

- A x 1
- C x 3
- B x 5
- C x 1
- B x 1
- C x 2
- A x 3

- A x 1
- C x 3
- B x 5
- C x 1
- B x 1
- C x 3
- A x 3

87/88 – Fill = Default



Touch 88 – Fill = Default



78 – 4:3



Touch 78 – 4:3

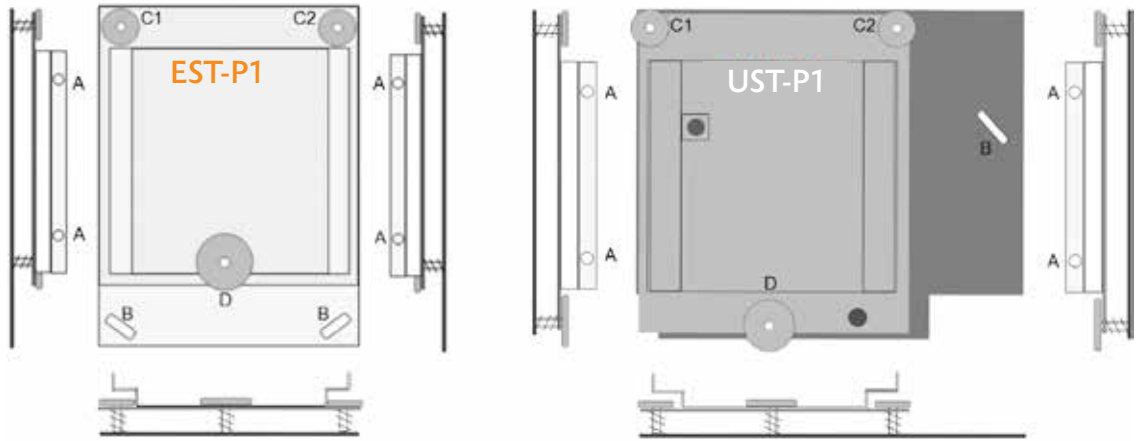


595 – 16:9

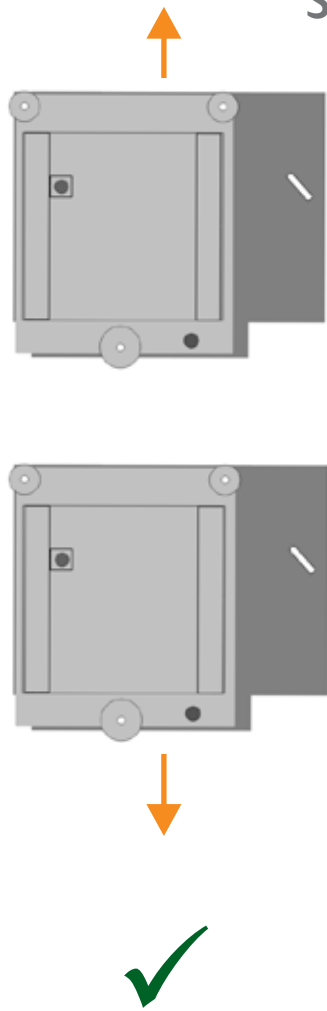


395 – 16:9



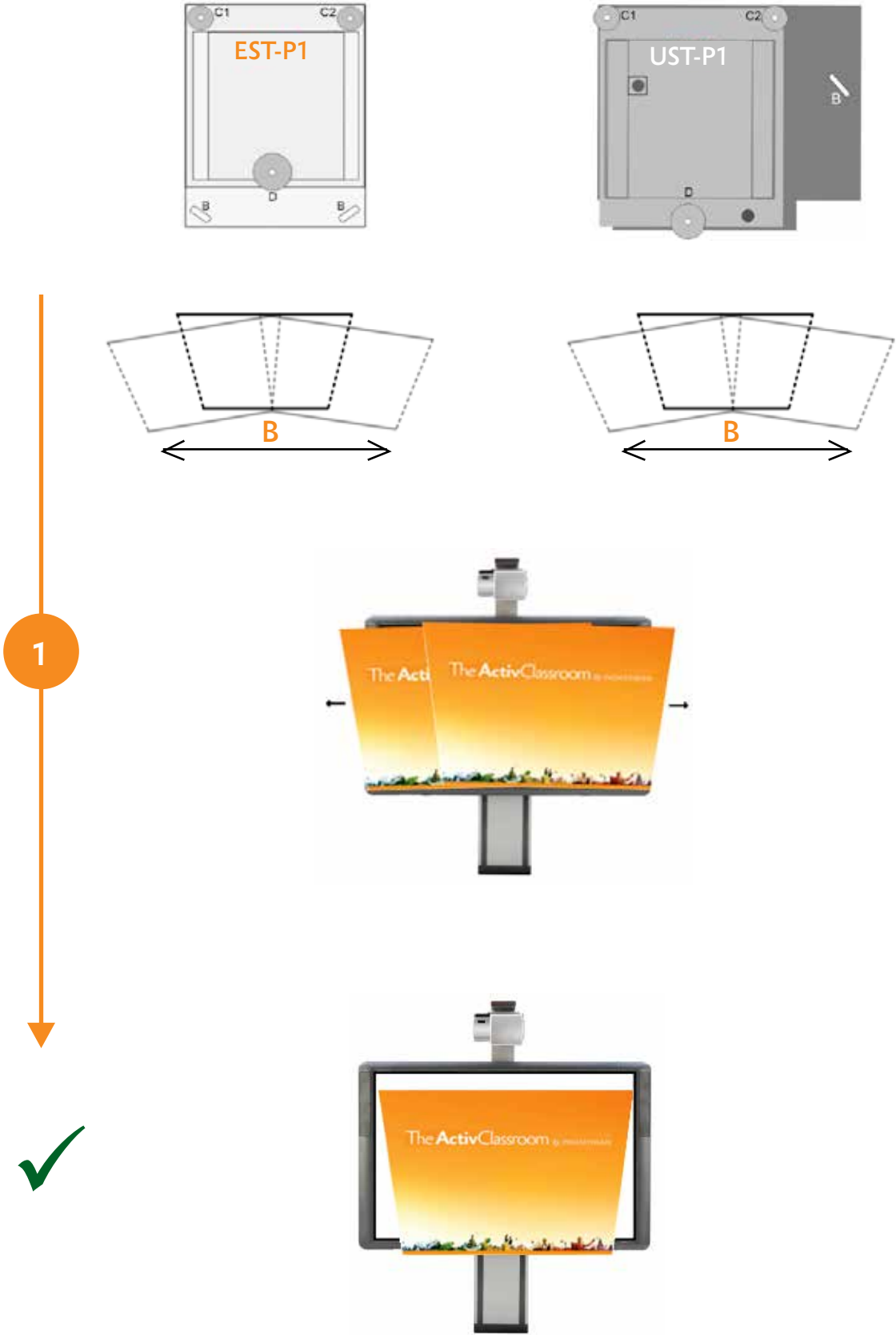


Sizing the Image



1

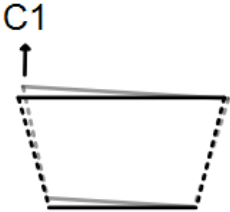
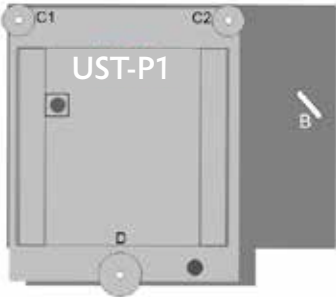




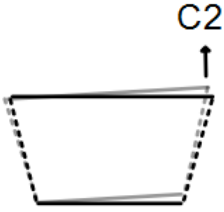


# EST-UST P1 Projector Alignment Guide

# Levelling of Image

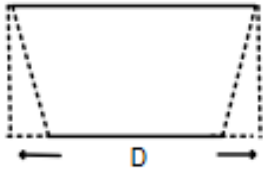
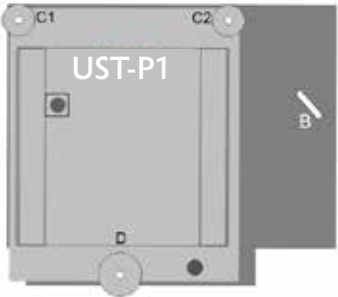


1



2





# EST-UST P1 Projector Alignment Guide

## Final Alignment - #2 (if required)

